

STEM TO-GO ACTIVITY

PLANT PETS

MATERIALS

- Clear Cup
 - Soil (1 cup)
 - Googly Eyes (1 pair)
 - Observation Log
 - Seeds (Plant Species: Red Clover)
- Find at Home**
- Water
 - A sunny location
 - Marker
 - Spoon



It is not recommended that you or your pets eat this plant.

INSTRUCTIONS

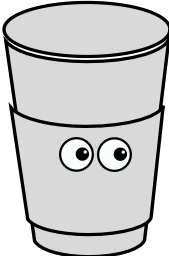
1. Attach the Googly Eyes onto the cup.
2. Draw a face on the cup!
3. Empty your soil into the cup.
4. Sprinkle the seeds on top of the soil. Cover with a thin layer of soil.
Add 3 spoonfuls of water.
5. Record the data in the Observation Log.
6. Add 1 spoonful of water every day.



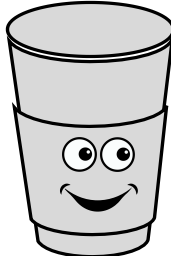
Watch this video to see how your plant will grow!

<https://www.youtube.com/watch?v=E933DspP9Ds>

1



2



3

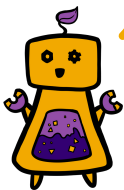


4



TIP!

Move your Plant Pet near a window to make sure your Plant Pet is growing!



WHAT YOUR PLANTS NEED TO GROW



WATER

Water helps move nutrients from the soil into the plant.



SUNLIGHT

Plants use light energy to make a type of sugar called **glucose**. They use glucose as their energy source.



AIR

Plants take carbon dioxide from the air, and use it to make glucose.



SOIL

Plants use soil to get the nutrients it needs to grow.

PLANT PETS

THE SCIENCE BEHIND IT ALL

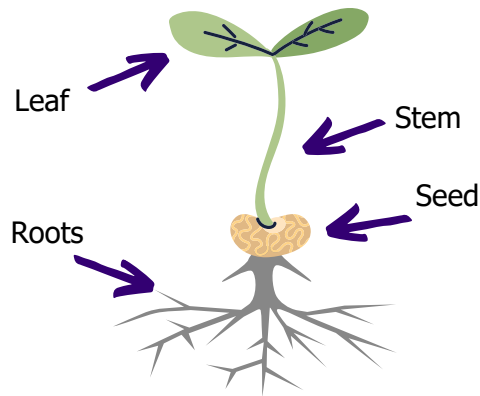
While the plant grows, observe all the parts of a plant - roots, stems, leaves, and seeds.

LEAF

The leaf uses sunlight to make food.

ROOTS

Roots give the plant support by anchoring the plant and absorbing water and nutrients needed for it to grow.



STEM

The stem holds the plant up and carries water to the rest of the plant

SEEDS

The seed will grow into a new plant.

LIFE CYCLE OF A PLANT

The life cycle of a plant, shows the different stages from the beginning of its life until the end.

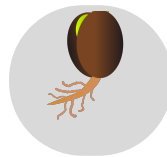
1 SEED

The plant cycle starts with the seed.



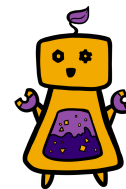
2 SPROUT

The roots are first to push out of the seed to absorb water and nutrients.



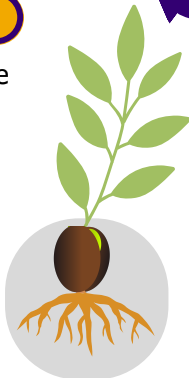
TIP!

Make sure to observe the process! You might be able to see the roots against the side of your cup!



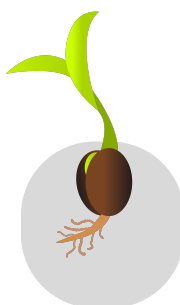
4 LEAVES

The leaves make food for the plant, and the plant can use this to make new seeds.



3 SEEDLING

The seedling (new plant) grows. The stem and leaves reach toward light.



Learn more about the life cycle of plants!

<https://www.youtube.com/watch?v=mZ3fRX1yqyM>

STEM TO-GO ACTIVITY

PLANT PETS

OBSERVATION LOG

SCIENTIST NAME

DATE PLANTED

PLANT SPECIES

Red Clover

The scientific name is:
Trifolium pratense

PREDICTIONS: (What I think the plant will look like)

Date Observed:

Drawing:

Observations:

Date Observed:

Drawing:

Observations:

Date Observed:

Drawing:

Observations:

Date Observed:

Drawing:

Observations:

Date Observed:

Drawing:

Observations:

Date Observed:

Drawing:

Observations:

Definitions

Predictions: what do you think will happen in the future?

Observations: recording what you notice (ex. colour, height, amount)